

# Clarion Suites Gateway

## 2010 Meeting Packages



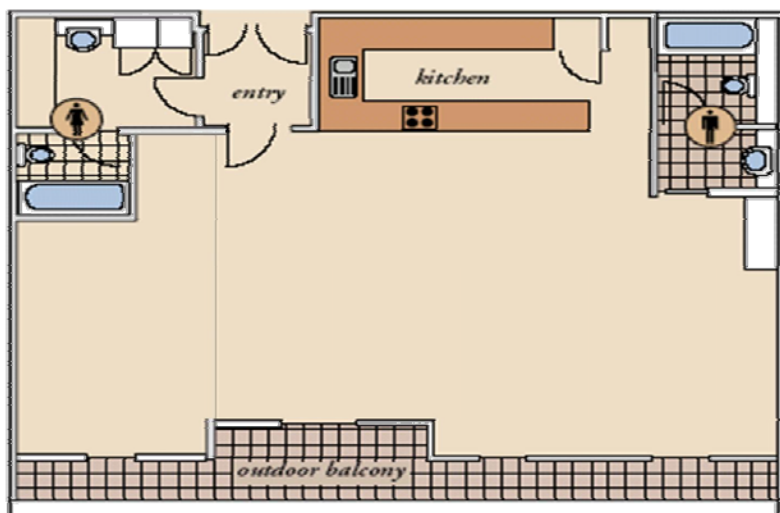
1 William St  
Melbourne VIC  
3000

# Conference & Meeting Facilities

## PREMIUM DAY DELEGATE PACKAGE

- Welcome Signage
- Arrival Tea & Coffee
- Morning Tea, Coffee & Coffee Break Selection
- Gourmet Buffet Luncheon
- Afternoon Tea, Coffee & Coffee Break Selection
- Mints & Ice Water
- Notepads & Pens
- Room Hire
- Standard AV Hire: Whiteboard & Markers, Flip Chart & Paper, OHP, Screen, VCR/DVD & TV Monitor
- 1 Car Park Space For Facilitator

**\$65.00 Per Person Per  
Day  
(Minimum 10  
Delegates)**



The Yarra View Room Floor Plan– Level 17

Room Capacity	Yarra View	William's Bar & Cafe
U-Shape	30	-
Theatre	60	-
Classroom	36	-
Cocktail	90	150
Banquet	40	110
Boardroom	30	-

# Conference & Meeting Facilities

## DAY DELEGATE PACKAGE

- Welcome Signage
- Arrival Tea & Coffee
- Morning Tea, Coffee and Coffee Break Selection
- Chef's Sandwich Bar or Finger Food Working Luncheon
- Afternoon Tea, Coffee and Homemade Biscuits
- Mints & Ice Water
- Notepads & Pens
- Room Hire
- Standard AV Hire: Whiteboard & Markers, Flip Chart & Paper, OHP, Screen, VCR/DVD & TV Monitor
- 1 Car Park Space For Facilitator

**\$60.00 Per Person Per Day**  
**(Minimum 10 Delegates)**



Night view from Crown View Room– Level 19

Room Capacity	Yarra View	William's Bar & Cafe
U-Shape	30	-
Theatre	60	-
Classroom	36	-
Cocktail	90	150
Banquet	50	110
Boardroom	30	-

# Room Hire & Package Additions

## ROOM HIRE (included in packages)

Half Day	\$450.00 per half day (4 hours)
Full Day	\$650.00 per day (8 hours)

## ADDITIONAL EXTRAS

Welcome Fruit Platter:	\$8.00 per person
Continuous Tea & Coffee Service	\$7.00 per person
Jug of Juice/Mineral Water:	\$12.00 each
Data Projector:	\$260.00 per day
Electronic Whiteboard:	\$140.00 per day
Additional Flipcharts:	\$50.00 per day

(Additional A/V prices available upon request)



Yarra View Room– Level 17



# Breakfast with a View

## EXECUTIVE CONTINENTAL BREAKFAST

- Selection of Chilled Juices
- Assorted Cereals with Full Cream and Skim Milk
- Fresh Seasonal Fruit Platter
- Plain and Fruit Yogurts
- Creamy Bircher with Strawberries, Apple and Raisins
- Full Bakers Basket of Muffins, Croissants, and Danishes
- Selection of Breads
- Assorted Preserves
- Percolated Coffee and Lipton Tea

\$22.00 Per Person

## EXECUTIVE DELUXE BREAKFAST

- Selection of Chilled Juices
- Assorted Cereals with Full Cream and Skim Milk
- Fresh Seasonal Fruit Platter
- Plain and Fruit Yogurts
- Creamy Bircher with Strawberries, Apple and Raisins
- Grilled Bacon, Sausages, Herb Crusted Tomatoes, Eggs, Mushrooms and Hash Browns
- Full Bakers Basket of Muffins, Croissants, and Danishes
- Selection of Breads
- Assorted Preserves
- Percolated Coffee and Lipton Tea

\$27.00 Per Person



# Coffee Break Selections\*

## SWEET TREATS

- Freshly Baked Assorted Muffins
- Home-style Scones with Jam & Whipped Cream
- Chocolate Mud Cake & Carrot Cake
- Chocolate Brownies
- Gourmet Selection of Biscuits
- Almond & Blueberry Tarts
- Lamingtons
- Assorted Danish Pastries
- Berry Cheesecake Slices

## SAVOURY EATS

- Ham & Cheese Croissants
- Assorted Finger Sandwiches
- Aussie Sausage Rolls with Bush Tomato Chutney
- Gourmet Mini-Pies
- Selection of Australian Cheeses with Crackers
- Mixed Savoury Quiches
- Thai Style Chicken & Vegetable Puffs

## HEALTHY CHOICES

- Fresh Fruit Platter and Health Bars
- Fruit Salad and Assorted Yogurts
- Vegetable Crudités with Dips



*\*One (1) Selection per break.*

# Day Delegate Lunch Options

## CHEF'S SANDWICH BAR

- Selection of Breads including Baguettes, Rustic Panini and Pita Wraps with Gourmet Fillings
- Roasted Potato & Seeded Mustard Salad
- Garden Salad with Homemade Vinaigrette
- Chef's Selection of Cakes and Desserts
- Served with Mineral Water, Juice and Freshly Brewed Coffee & Tea

## WORKING LUNCH

- Roast Potato and Capsicum Salad
- Garden Salad with Homemade Vinaigrette
- Supreme Pizza
- Chicken Skewers with Peanut Sauce
- Selection of Gourmet Wraps
- Chef's Selection of Cakes and Desserts
- Served with Mineral Water, Juice, and Freshly Brewed Coffee & Tea



*\*Above Lunch Options are included in the \$60 Day Delegate Package.  
Menus are subject to change based on availability of ingredients.*

# Gourmet Luncheon Options\*

8

## FRENCH FARE BUFFET

Salad Nicoise  
Garden Salad with Homemade Vinaigrette  
Grilled Beef Medallions with Burgundy Sauce  
Coq Au Vin  
Grilled Salmon with Caper Butter Sauce  
Seasonal Vegetables and Potatoes in Herb Butter  
Selection of Crusty Breads  
Chef's Selection of Cakes and Desserts

## ITALIAN LUNCHEON

Antipasto Platter with Char Grilled Vegetables and Cured Meats  
Vine Ripened Tomatoes, Bocconcini and Rocket Salad  
Lasagne Bolognese  
Cheese and Spinach Ravioli with Semidried Tomatoes and Olives  
Chicken Parmigiana  
Bakers Basket of Gourmet Breads  
Chef's Selection of Cakes and Desserts

## CHEF'S BBQ

Assorted Sausages, Marinated Chicken, and Minute Steaks  
Roasted Potato Salad with Crispy Bacon  
Garden Salad with Dijon Mustard Vinaigrette  
Selection of Crusty Breads  
Chef's Selection of Cakes and Desserts

## CHEF'S LUNCHEON

Rocket Salad with Semidried Tomatoes and Parmesan  
Greek Salad  
Penne Salad with Avocado Dressing  
Grilled Beef with Mushroom Ragout  
Medaly of Garden Vegetables  
Baked Fish of the day with Mexican Salsa  
Thai Red Chicken Curry  
Saffron Rice

## FAR EASTERN BUFFET

Thai Red Chicken Curry  
Teriyaki Beef  
Stir Fry Vegetables with Fried Shallots  
Fried Rice  
Potato and Coriander Salad  
Garden Salad with Homemade Vinaigrette  
Chef's Selection of Cakes and Desserts

\*Gourmet Lunch Options are inclusive in the \$65 Executive Day Delegate package.

**All meals served with Mineral Water, Juice, and Freshly Brewed Tea & Coffee.**

# Location and Parking

## AIRPORT

25 kms from Melbourne Airport

## AIRPORT TRANSFERS

Star Bus Shuttle ph: 8336 6111

## CAR PARKING

1 Car Park Space is offered free of charge at the Clarion Suites Gateway during the Function for the facilitator

### WILSON PARKING

#### **522 Flinders Lane**

Between King and Spencer Streets

#### **453 Flinders Street**

Between King and William Streets

### **AXA Centre**

Enter via Flinders Lane near Market Street

### KINGS PARKING

#### **300 Flinders Street**

#### **15 William Street**

*(adjacent to Clarion Suites Gateway)*



*Hotel Entry on William Street*

