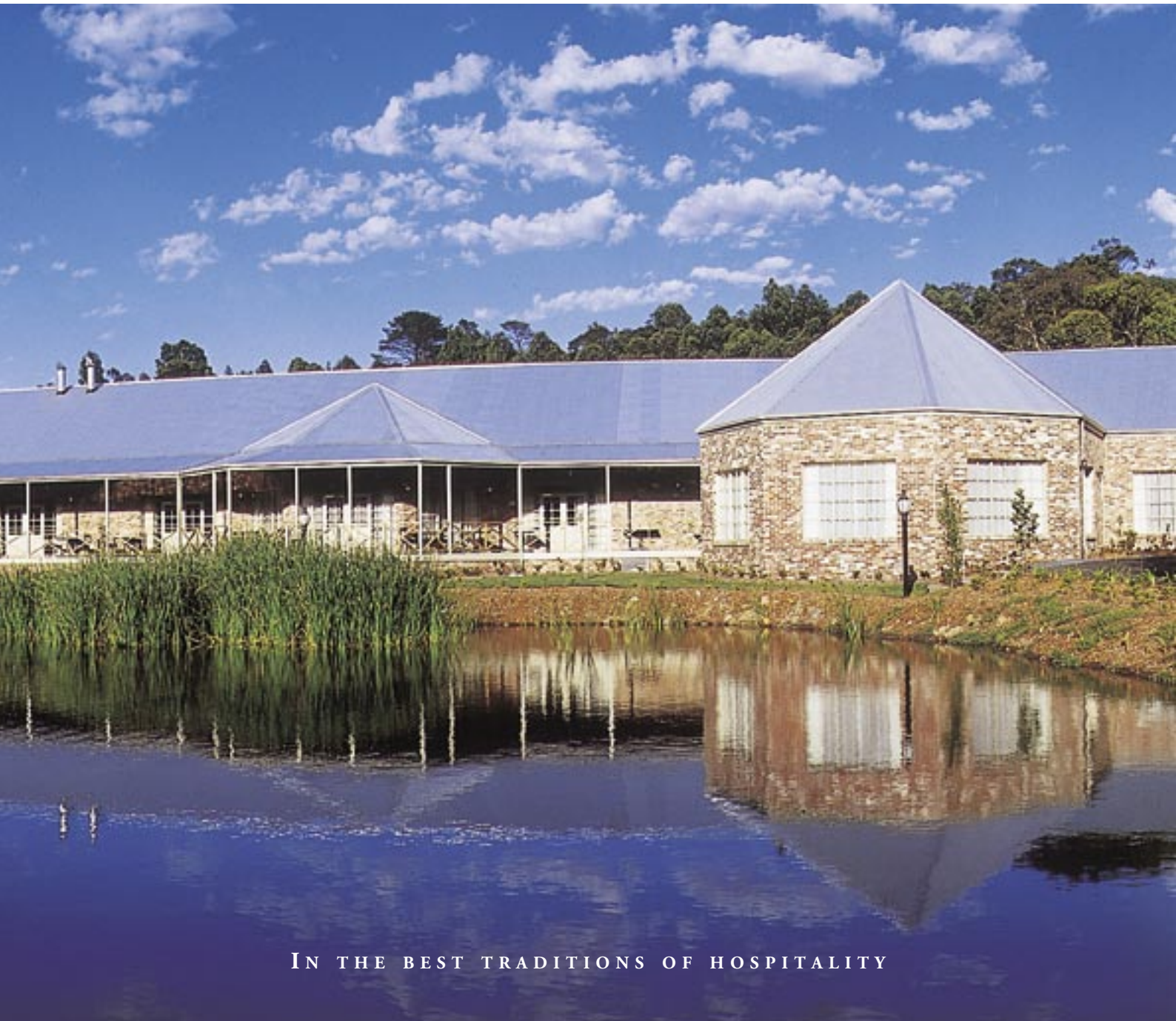




DOHERTY HOTELS

# Ballarat Lodge

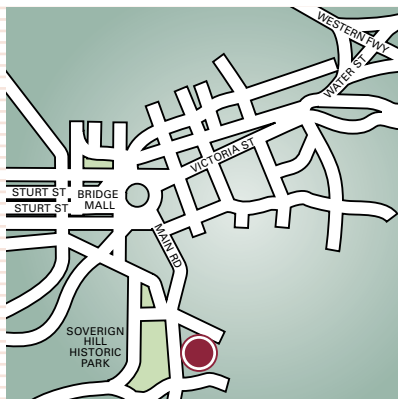
& CONFERENCE CENTRE



IN THE BEST TRADITIONS OF HOSPITALITY



Adelphi Theatre



## Location

Uniquely located within the Victorian goldfields opposite the award-winning tourist attraction, Sovereign Hill, Doherty Ballarat Lodge has been purpose-built to host corporate conferences and functions. With warm country hospitality, beautiful landscaped gardens and it's own Thalgo health and beauty spa, the Lodge offers a relaxing and memorable location for any function.

Doherty Ballarat Lodge is a comfortable 75 minute drive from Melbourne CBD along the Western Freeway, just 1 hour from Tullamarine Airport and convenient to the central rail link. Our rustic-style 4 1/2 star hotel has 71 beautifully appointed rooms and provides all the style and facilities of a superior city hotel while enjoying the charm of a country retreat.

## Room Facilities

- ♦ ensuite bathroom
- ♦ heated towel rails & heat lamps
- ♦ air conditioning/heating
- ♦ tea & coffee making facilities
- ♦ direct-dial telephone
- ♦ modem connection
- ♦ iron & ironing board
- ♦ mini bar & fridge
- ♦ colour television
- ♦ radio alarm clock

## Guest Facilities and Services

- ♦ 2 restaurants – The-Victoria Restaurant & The Conservatory Restaurant
- ♦ lounge bar
- ♦ 24-hour reception
- ♦ 24-hour room service
- ♦ complimentary parking
- ♦ dry cleaning
- ♦ guest laundry
- ♦ baby-sitting
- ♦ tour booking service
- ♦ safety deposit facility
- ♦ 3 coach parking bays
- ♦ complimentary newspapers

## Leisure facilities

- ♦ gymnasium
- ♦ health & beauty spa
- ♦ outdoor swimming pool
- ♦ royal tennis court
- ♦ squash court
- ♦ snooker room
- ♦ BBQ area
- ♦ golf (18 holes) nearby
- ♦ games room
- ♦ jogging track

## Conference and Meeting Facilities

Doherty Ballarat Lodge has a choice of 15 versatile function rooms of varying sizes, catering for groups of 10 to 300. With 4 hectares of beautiful landscaped gardens at your disposal, Doherty Ballarat Lodge is perfect for corporate conferences or group workshops.

Take advantage of our modern Business Centre equipped with computer and printing facilities, e-mail, faxing, photocopying, and secretarial services.

Our Conference Co-ordinator can assist with specialist training and motivational programs, activities, room decorations, theme nights, or the staging of an event. Friendly and attentive staff will be on hand throughout to ensure that your function is an enjoyable and memorable one.

Ask about the Thalgo Sanctuary health and beauty spa programme.





Victoria Private Dining Room

## Conference and Banqueting Rooms

### Eureka Ballroom

Elegantly appointed, the Eureka Ballroom has a prestigious atmosphere, with floor to ceiling bay windows. The room is perfect for conference groups, formal dinners, expo's or product launches.

### Adelphi Theatre

A speaker's dream, this unique venue has tiered seating for 110 in the style of an amphitheatre, with discreet lighting and large writing tables. With its own PA system and sufficient power for personal laptops the Adelphi Theatre is sure to create an everlasting impression on delegates.

### Prince Regent

Suitable for large functions, the Prince Regent has an abundance of natural light and rustic charm. The room is located close to our Business Centre and has a pre-function foyer for morning and afternoon teas.

### The Conservatory

Featuring a large open log fire, the Conservatory offers delegates an ideal venue for private dining.

### Sovereign Ballroom

The elegant atmosphere of this room makes it perfect for dinner functions, weddings, expo's and large meetings. Features include a pre-function area, permanent dance floor area, sound system, natural light and adjustable ceiling lighting.

### Lady Hotham Room

Featuring high vaulted ceilings, the Lady Hotham Room offers delegates abundant natural light. Attached to this room are 3 splendid syndicate rooms.

### Victoria Private Dining Rooms 1 & 2

Our two private dining rooms are located adjacent to The Victoria Restaurant and feature floor to ceiling bay windows and french doors that open onto the verandah overlooking the lake. They are ideal for private dinners or small conferences.

### Barkly Boardroom

A splendid room, it is ideally suited for management gatherings of up to 14 delegates. The Barkly Boardroom has an open fireplace, wood-panelled walls, natural light and a magnificent mahogany table with comfortable leather chairs.

### Stables Complex

Stables Complex features floor to ceiling timber panels, an exclusive open fire place and lounge area. The adjoining syndicate rooms are perfect for break-out rooms and the outdoor verandas are ideal for morning and afternoon teas.

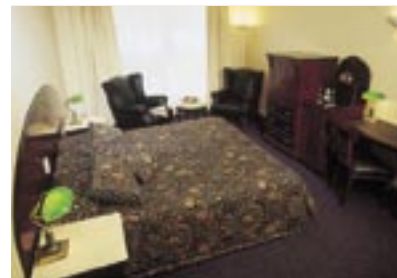
### Syndicate Rooms 1 & 2

These two rooms are ideal for small meetings or additional break-out rooms.

## Technical Equipment and Support

We offer a comprehensive range of technical equipment (as listed below), supported by knowledgeable professionals. Any further audio-visual requirements can be arranged by our Conference Co-ordinator.

- ❖ public address system
- ❖ overhead projectors
- ❖ screens
- ❖ whiteboards
- ❖ flipcharts
- ❖ lectern
- ❖ portable staging
- ❖ adjustable lighting
- ❖ independent heating & air-conditioning
- ❖ electronic whiteboards
- ❖ data projectors



*Right Top:* Standard Room  
*Right Bottom:* Luxury Spa Room

## Floor Plan



### Special Event Dining

Our cuisine is contemporary Australian and our two restaurants offer a variety of styles. For groups, we offer a fully catered buffet BBQ under the pergola in our Hidden Garden, two private dining rooms each seating up to 60 guests and specially designed function menus for dining in our ballrooms.

## Facilities

Room	Dimensions			Capacities					
	Size (m)	Area (m <sup>2</sup> )	Height (m)	Theatre Style	Classroom Style	Cocktail Function	Banquet Table	U-Shape	Board Room
Adelphi Theatre	14.6 x 15.4	228	2.4-6.8	–	120	–	–	–	–
Prince Regent Room	10.4 x 19.0	198	2.6	250	110	140	–	50	–
Lady Hotham Room	7.9 x 13.6	107	5.6	100	50	–	–	25	25
Midas Room	6.0 x 10.4	62.4	2.6	50	25	–	–	20	25
Morning Star	10.0 x 7.0	70	2.6	30	30	–	–	25	–
Barkly Boardroom	5.0 x 10.6	53	3.0	–	–	–	14	–	14
Syndicate Rooms 1 & 2	4.3 x 5.0	21.5	2.9	15	–	–	10	–	12
Stables Complex	13.6 x 7.9	–	–	50	35	–	–	25	20
The Conservatory	10.0 x 16.5	165	3.5	–	–	100	70	–	–
Eureka Ballroom	28.0 x 11.3	316	3.5	300	120	400	200	60	–
Sovereign Ballroom	8.0 x 28.7	230	2.7	250	100	140	120	50	–
The Victoria 1 & 2	7.5 x 11.0, 8.0 x 10.0	85	3.5	70	30	60	–	25	20



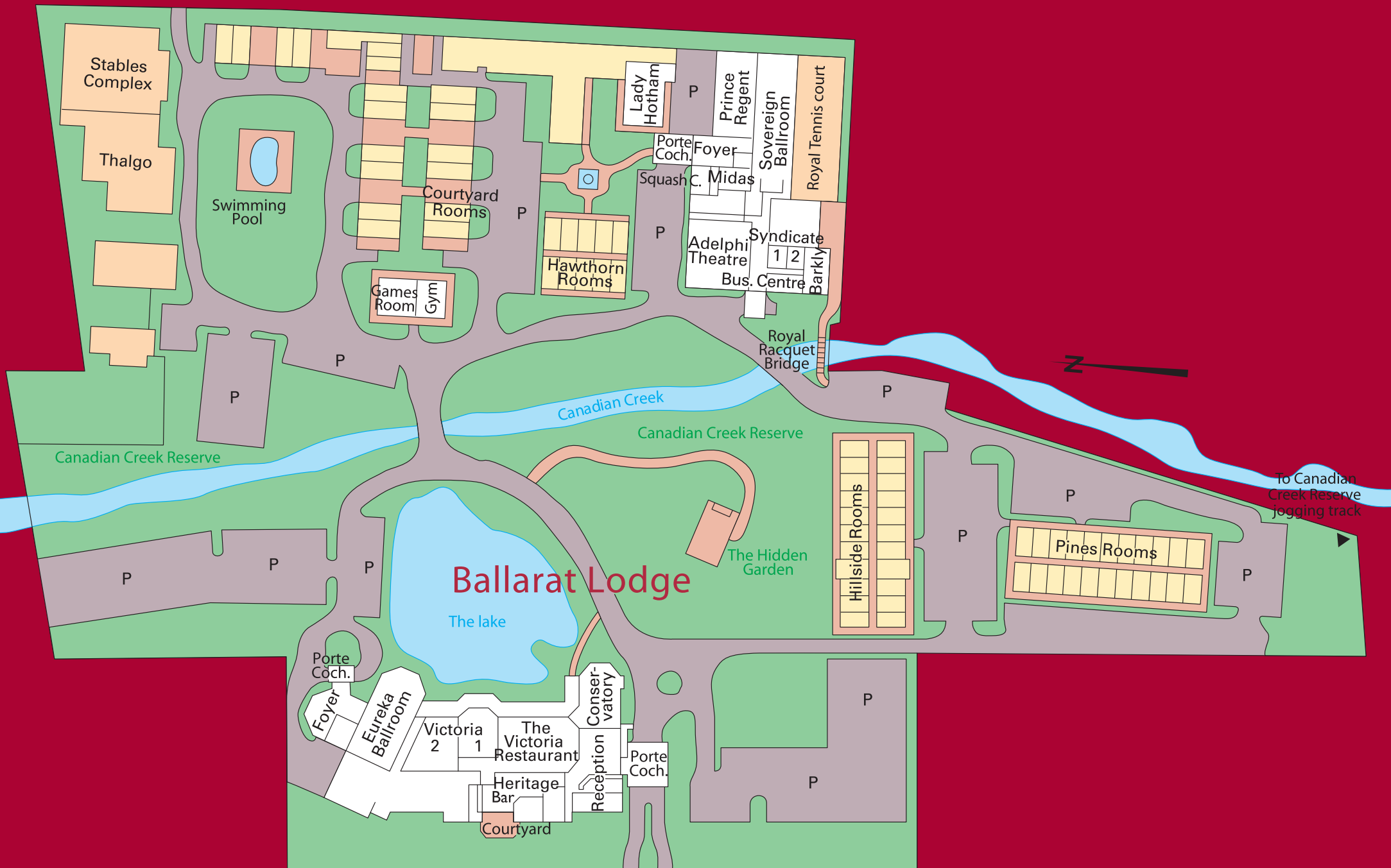
**DOHERTY HOTELS**

Doherty Ballarat Lodge & Conference Centre

613 Main Road, Ballarat Victoria Australia 3350

Tel: (+61) 3 5331 3588 Fax: (+61) 3 5333 3042

Email: [conf.ballarat@dohertyhotels.com.au](mailto:conf.ballarat@dohertyhotels.com.au) Web: [www.dohertyhotels.com.au](http://www.dohertyhotels.com.au)



# Ballarat Lodge



To Canadian Creek Reserve jogging track