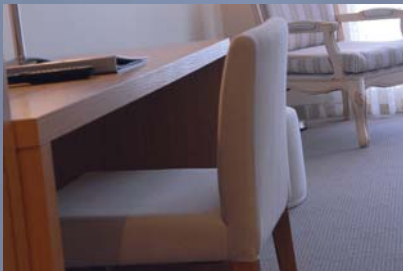


mantra  
deep blue

Warrnambool VIC



Conference and Function Packages

stella™  
HOSPITALITY GROUP



The iconic attractions of the Great Ocean Road and Shipwreck Coast region, combined with the beachside location and geothermal bath house and spa make Mantra Deep Blue a unique hotel.

At Mantra Deep Blue we cater for your event, whether it be a casual, formal or corporate. We understand your desire to make your conference perfect; therefore we assure you of our commitment to your event, providing personal attention at all times, to even the smallest of details. From your audio visual requirements, to the tricky process of selecting your menu, we will be there to assist you every step of the way.

We have two spacious function rooms available, the Regatta Room which can comfortably seat up to 150 people in banquet style, and the Anchorage Room which will comfortably seat up to 90 people in banquet style. The décor from the hotel runs throughout, with intimate soft colourings and high ceilings featuring white lining boards and subtle lighting. You will not be disappointed by the options available.

In addition to the 2 larger function rooms, we have an executive boardroom which can accommodate up to 20 people.



Picture your event taking place on the shores of one of Australia's most famous coastlines.



From the cool sea air into the simplistically elegant and sumptuous meeting rooms at Mantra Deep Blue, you and your guests will be overwhelmed by the warmth and charm of our inviting décor with soft provincial colourings.



#### Property facilities

- [The Water Table Restaurant & Bar](#)
- [Deep Water Baths & Spa](#)
- [Gymnasium](#)
- [Business Centre](#)
- [Room Service](#)
- [Secure undercover parking](#)

#### Room features

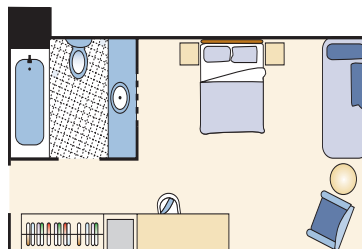
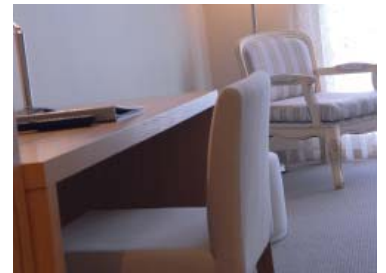
- [Cable TV & movies on demand](#)
- [Broadband Internet connection](#)
- [CD player](#)
- [Spa Bath \(suites only\)](#)

The on-site Deep Water Baths and Spa is unique, drawing mineral-rich, heated water from an underground aquifer.

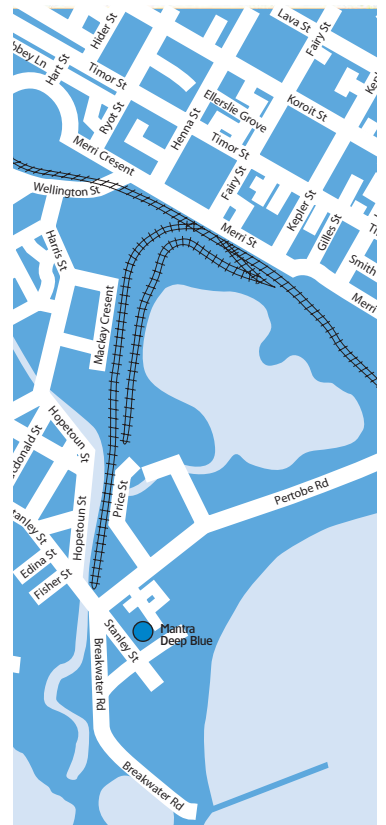


#### Location

- [Beach: 100m](#)
- [Airport: 2.5 hours \(Avalon\)](#)
- [Main Street: 2km](#)
- [Grocery Store: 2km](#)



Floor plan shown is the Hotel Room.





We have two spacious meeting rooms available. The decor from the hotel runs throughout, with intimate soft colourings and high ceilings featuring white lining boards and subtle lighting. You will not be disappointed by the options available.

### Regatta Room

Theatre	185 people
Classroom	120 people
U-Shape	50 people
Banquet	150 people
Cocktail	250 people

#### Room Hire:

Half Day \$350.00, Full Day \$500.00, Evening \$350.00

### Anchorage Room

Theatre	115 people
Classroom	75 people
U-Shape	40 people
Banquet	90 people
Cocktail	155 people

#### Room Hire

Half Day \$250.00, Full Day \$400.00, Evening \$250.00

### Captains Boardroom

Boardroom	20 people
Banquet	20 people

#### Room Hire

Half Day \$150.00, Full Day \$300.00, Evening \$150.00

### Regatta & Anchorage Combined

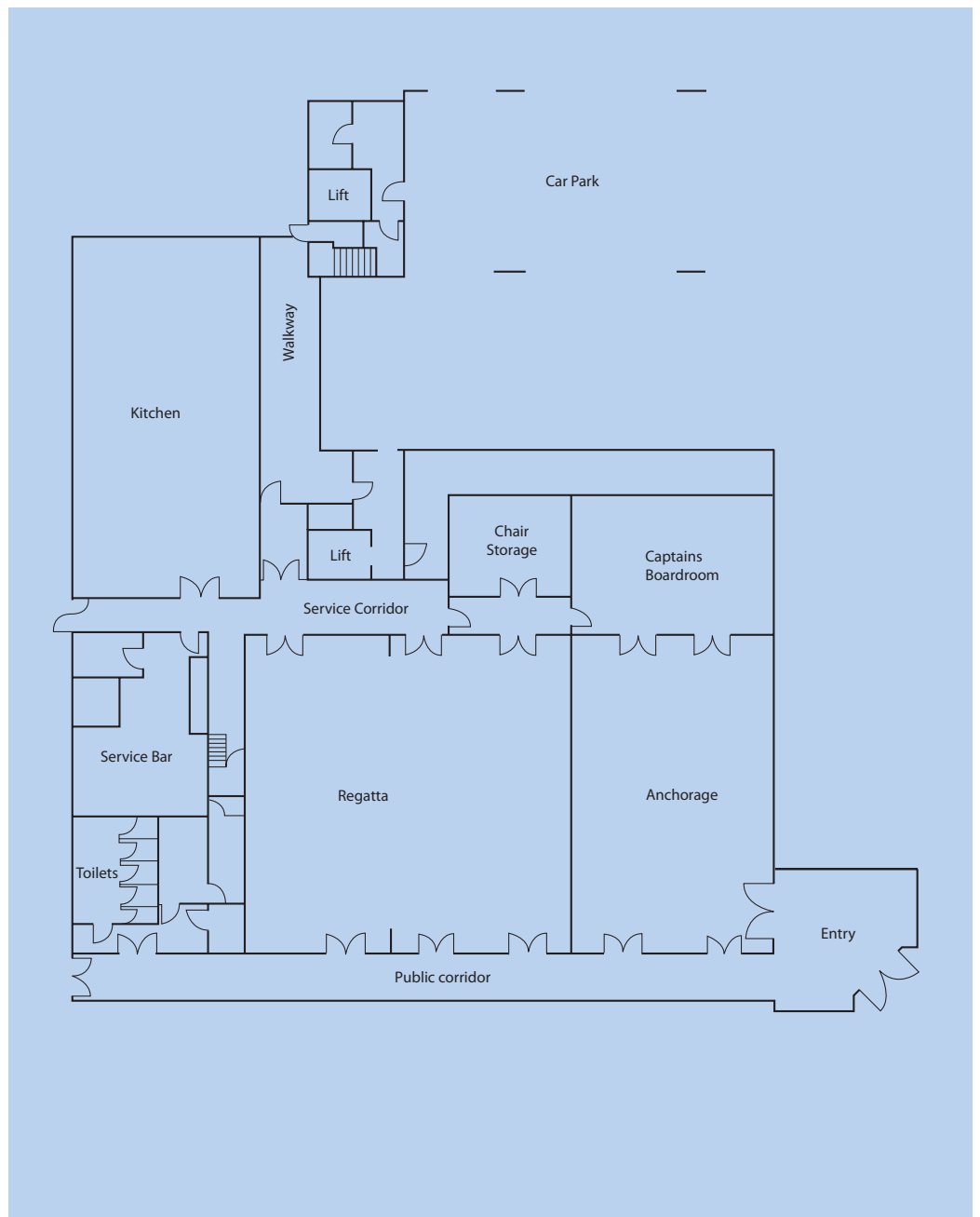
Theatre	300 people
Classroom	200 people
Banquet	250 people
Cocktail	400 people

#### Room Hire

Half Day \$450.00, Full Day \$600.00, Evening \$450.00

After midnight surcharge - \$250 per hour

(maximum extension till 1am)





From the decorations on the tables, to the tricky process of selecting your menu, we will be there to assist you every step of the way, making the lead-up to your function an enjoyable and professional experience from start to finish.



At Mantra Deep Blue, our professional team is happy to work with you to enhance your event, as well as assist you with any special requirements you may have, such as audio visual needs, in order to tailor your event to suit your individual needs.

We also pride ourselves in being able to offer you and your guests that little bit more with complimentary parking on-site, preferred accommodation rates available for function attendees and corporate guests, and 24 hour reception.

Not only this, but if you book your event at Mantra Deep Blue, we assure to provide you with the following services.



- Your own personal Events Coordinator, with several years of experience to assist you from the moment you book your function until the conclusion of the event.
- The desired function room sophisticatedly decorated and set-out as per your request, on your designated event date.
- Complimentary on-site parking for event guests.
- Assistance in designing a menu to meet your personal tastes, as well as any special dietary requirements your guests may have.
- A stunning destination, unlike anywhere else in Warrnambool, for your special event.



The conference room hire costings are inclusive of standard equipment such as:

- whiteboard, flip chart, screen, iced water, mints, notepads & pens

We have access to state of the art audio/visual equipment via our in-house production company including facilities such as:

- electronic whiteboard, multi-media projectors and lapel microphones.



Mantra Deep Blue's food and beverage team, renowned for showcasing the best of Victorian regional and seasonal produce at The Water Table Restaurant, will work with you on creating the perfect menu. An exquisite balance of flavours and presentation will be the highlight of your special event, with carefully selected wines to complement the food. Your guests will remember the event long after the day has ended for all the right reasons.

#### All Day Catering packages

includes room hire, white board, flip chart, screen, iced water, mints, notepads and pens.

##### Package 1

**\$59.00 per person**  
minimum 10 pax

- Tea & coffee on arrival
- Tea, coffee & bakery items for morning tea
- Working lunch including an assortment of savoury items, baguettes and sandwiches, seasonal fruit platter, selection of juices and freshly brewed coffee and tea
- Tea, coffee & bakery items or gourmet biscuits for afternoon tea

##### Package 2

**\$65.00 per person**  
minimum 10 pax

- Tea & coffee on arrival
- Tea, coffee & bakery items for morning tea
- Buffet lunch including 2 hot dishes, 2 salads, cheese platter, fruit platter, selection of juices and freshly brewed coffee and tea
- Tea, coffee & bakery items or gourmet biscuits for afternoon tea

##### Package 3

**\$70.00 per person**  
minimum 10 pax

- Tea & coffee on arrival
- Tea, coffee and bakery items for morning tea
- Two course sit down lunch
- Tea, coffee & bakery items or gourmet biscuits for afternoon tea

#### Individual Catering costs

- Tea & coffee  
\$4.00 per person
- Tea, coffee & 2 bakery items  
\$9.00 per person
- Tea, coffee & gourmet biscuits  
\$7.00 per person
- Working Lunch  
\$38.00 per person
- Buffet Lunch  
\$43.00 per person
- Bowl of fruit  
(includes 7 pieces of fruit)  
\$15.00 per bowl
- Fruit platter  
(for 10 pax)  
\$15.00 per platter
- Cheese platter  
(for 10 pax)  
\$30.00 per platter

#### Post Conference Packages

**\$50.00 per person**  
minimum 10 pax

- 1 hour of house beer, wine & soft drink served with canapes at the conclusion of the conference

**\$30.00 per person**  
minimum 10 pax

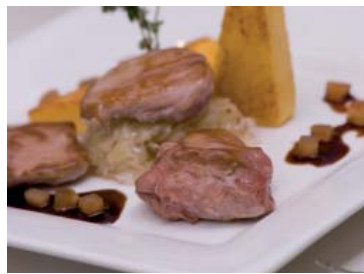
- 1 hour of premium beer, wine & soft drink served with cheese and fruit platters at the conclusion of the conference

#### Breakfast

Continental Buffet  
\$16 per person

Sit down plated  
\$19 per person

Full Buffet  
\$25 per person



## Sit down banquet packages

---

### 2 Course Set Lunch / Dinner menu

with 2 options per course

Standard - \$45.00 per person

Deluxe - \$55.00 per person

### 3 Course Set Lunch / Dinner menu

with 2 options per course

Standard - \$65.00 per person

Deluxe - \$75.00 per person

### 2 Course Limited A La Carte Lunch / Dinner menu

(only available for groups of 50 and below)

with 2 choices per course

Standard - \$59.00

Deluxe - \$69.00

### 3 Course Limited A La Carte Lunch / Dinner menu

(only available for groups of 50 and below)

with 2 choices per course

Standard - \$86.00 per person

Deluxe - \$96.00 per person

### Buffet Lunch / Dinner

Standard - \$75.00 per person

Deluxe - \$85.00 per person

## Pre-Dinner Canapés

---

1/2 hour duration

**\$6.00 per person**

- 4 pieces per person  
Chef's choice of canapés on arrival

Only available in conjunction with a sit down banquet package.

### Canapé function

---

1 hour duration

**\$35.00 per person**

- 6 pieces of finger food per person  
Client to choose 2 cold & 4 hot items from Canapé menu

2 hour duration

**\$55.00 per person**

- 12 pieces of finger food per person  
Client to choose 4 cold & 6 hot items from Canapé menu

3 hour duration

**\$80.00 per person**

- 18 pieces of finger food per person  
Client to choose 6 cold and 10 hot items from Canapé menu

### Upgrade to grazing dishes

Additional \$7.00 per person per item

### High Tea

**\$25 per person**

- Includes hot scones with jam and cream, finger sandwiches and a selection of delicious cakes and slices as well as unlimited Twinings Tea and self serve Vittoria coffee.



## Beverage Package

---

### Standard

Carlton Draught, Cascade Light, White Wine (Stoney Peak Chardonnay), Red Wine (Stoney Peak Shiraz Cabernet), Sparkling Wine (Stoney Peak Brut) includes soft drink , bottled water and juice.

- 1 hour \$18 per person
- 2 hours \$29 per person
- 3 hours \$35 per person
- 4 hours \$41 per person
- 5 hours \$47 per person

### Premium

Crown Lager, Cascade Light, White Wine (Newtons Ridge Sauvignon Blanc), Red Wine (Newtons Ridge Shiraz), Sparkling Wine (Newtons Ridge Sparkling Trio), Soft Drinks, bottled water and Orange Juice.

- 1 hour \$25 per person
- 2 hours \$34 per person
- 3 hours \$40 per person
- 4 hours \$46 per person
- 5 hours \$52 per person

### Cash Bar/Bar Tab

A cash bar or 'bar tab' is another popular option. Beverages will be charged on consumption.

Whilst our packages are all inclusive, we do practice responsible service of alcohol. Due to licensing restrictions we are unable to accommodate requests for BYO drinks.



Why not take some time out to visit the Deep Water Baths and Spa facility. Mantra Deep Blue is the first resort of its kind in Australia to utilize the therapeutic benefits of geothermal water – drawn from an aquifer 800 metres under the earth's surface. This salt & mineral rich water arrives for immediate use at 45-50 degrees celsius. It continually replenishes itself and is recognised for its healing and restorative qualities.

We are pleased you are considering Mantra Deep Blue as the venue for your event, and look forward to the opportunity to make your event a stunning and memorable one!

For more information on the property, or to look at some of our current images, please visit our website; [www.mantradeepblue.com.au](http://www.mantradeepblue.com.au), alternatively feel free to contact our Conference & Events Manager.

t: (03) 5559 2000

e: [deepblue.func@mantra.com.au](mailto:deepblue.func@mantra.com.au)

